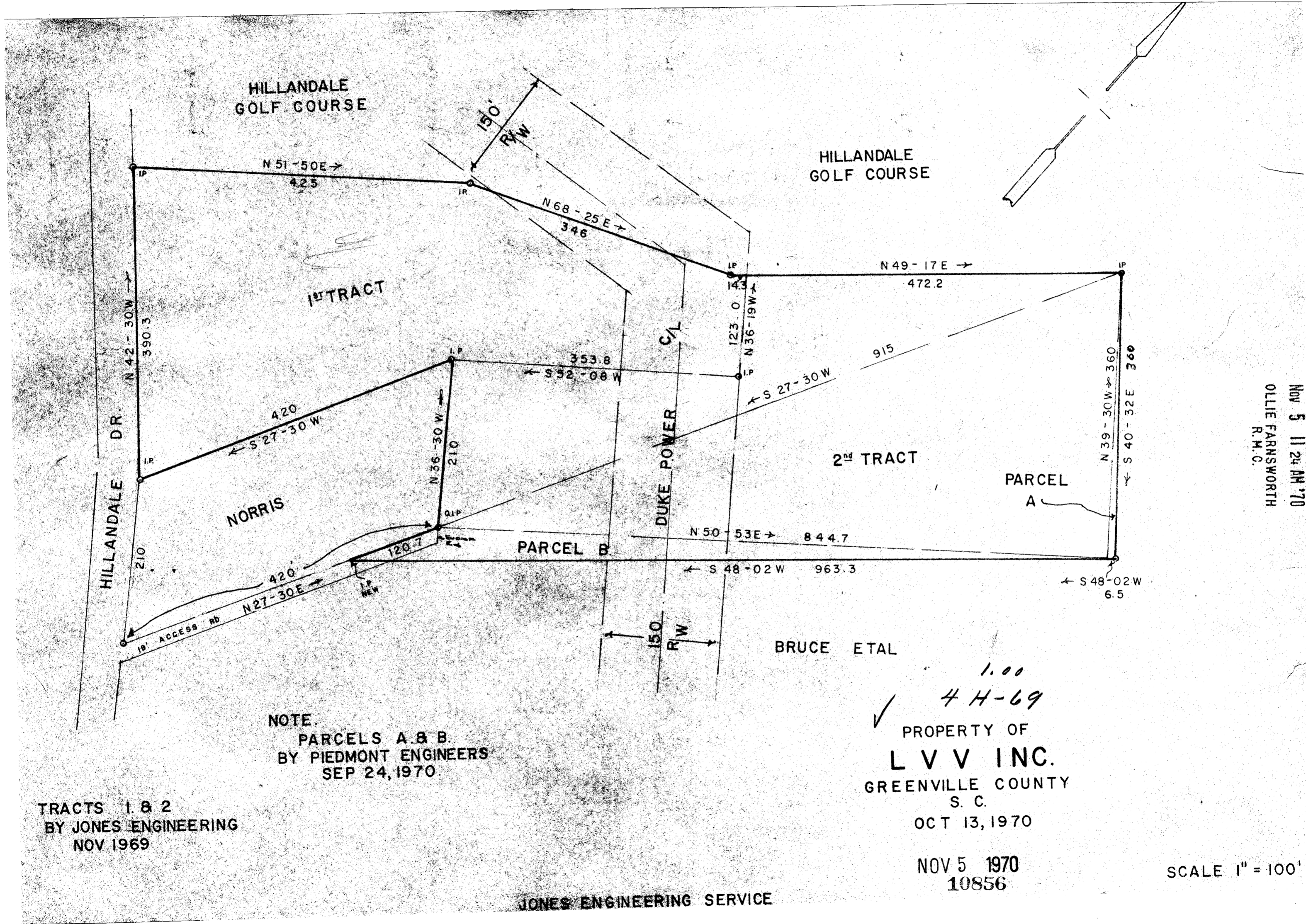


10856 Filed This 5 day of Nov. 1970
 And Recorded in Vol. 44 Page 69 at 11:24 A.
 Ollie Farnsworth
 Register Mesne Conveyance Greenville County, S. C.



Nov 5 11 24 AM '70
 OLLIE FARNSWORTH
 R.M.C.

NOTE:
 PARCELS A & B
 BY PIEDMONT ENGINEERS
 SEP 24, 1970

TRACTS 1 & 2
 BY JONES ENGINEERING
 NOV 1969

BRUCE ETAL
 1.00
 ✓ 4 H-69
 PROPERTY OF
L V V INC.
 GREENVILLE COUNTY
 S. C.
 OCT 13, 1970

NOV 5 1970
 10856

SCALE 1" = 100'

JONES ENGINEERING SERVICE

68 (cont.)